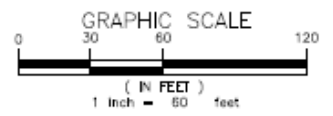




NOTES:

1. BASEMAP COMPILED FROM TALBOT COUNTY 2015 LIDAR AND 2015 PLANIMETRICS
2. TIDAL RANGE IS 1.43 FEET
3. SPOT ELEVATIONS ARE FROM BAYLAND SURVEY DATED FEBRUARY 13, 2023
4. ELEVATIONS ARE IN FEET AND REFER TO NAVD88

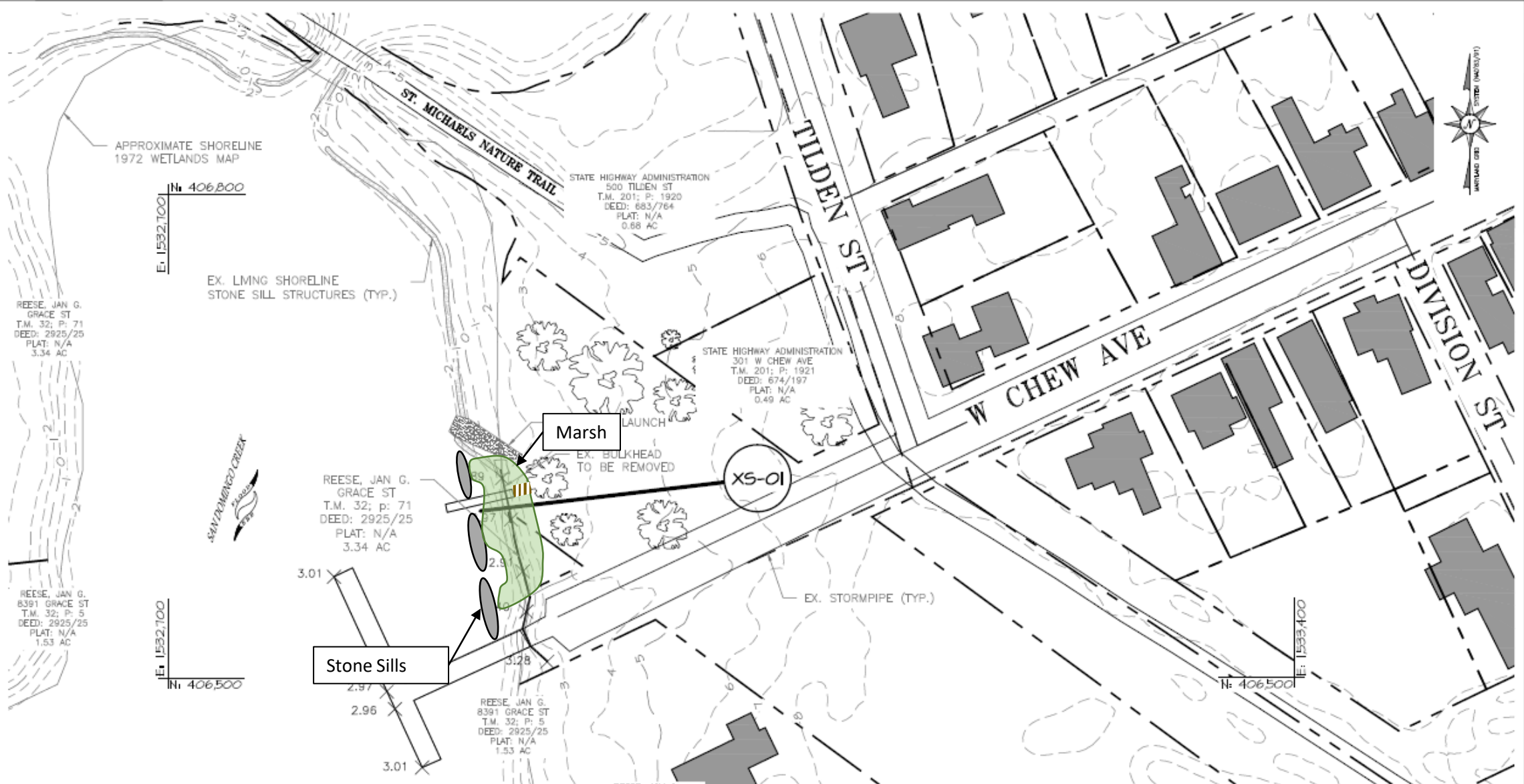


BayLand
 Consultants & Designers, Inc.
"Integrating Engineering and Environment"

7455 New Ridge Road, Suite T Phone: (410) 694-9401
 Hanover, Maryland 21076 Fax: (410) 694-9405
 www.baylandinc.com

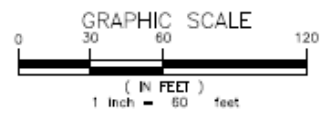
ST. MICHAEL'S AT SAN DOMINGO CREEK
OPTION 1

DRAWN BY: XXX	DATE: 10/25/23	SCALE: 1" = 60'
CHECKED BY: XXX	DATE: 10/25/23	



NOTES:

1. BASEMAP COMPILED FROM TALBOT COUNTY 2015 LIDAR AND 2015 PLANIMETRICS
2. TIDAL RANGE IS 1.43 FEET
3. SPOT ELEVATIONS ARE FROM BAYLAND SURVEY DATED FEBRUARY 13, 2023
4. ELEVATIONS ARE IN FEET AND REFER TO NAVD88



BayLand
Consultants & Designers, Inc.
"Integrating Engineering and Environment"

7455 New Ridge Road, Suite T Phone: (410) 694-9401
Hanover, Maryland 21076 Fax: (410) 694-9405
www.baylandinc.com

ST. MICHAEL'S AT SAN DOMINGO CREEK
OPTION 2

DRAWN BY: XXX	DATE: 10/25/23	SCALE: 1" = 60'
CHECKED BY: XXX	DATE: 10/25/23	